



# KJ CUSTOM SCREENS

SPECIFICATION MANUAL

# MISSION STATEMENT

KJ Custom Screens & Outdoor Living exists to provide your client the same comfort outside that they feel inside their home. We believe in building relationships, so our focus is always on our clients' satisfaction.



---

# BASIC SCREEN INFORMATION

## SCREEN CHOICES

Here are our recommendations:

- If your patio faces North or East:
  - Bug Screen
  - 80% solar – this will help specifically retain heat during the winter
- If your patio faces South or West:
  - 80% solar
  - 90% or 95% solar

## UNIT COLORS

- White, Linen, Sandalwood, Brown, Black, Bronze, Grey (COMING SOON: APRIL 2021), Custom Colors available upon request.



**\*\* PLEASE NOTE: THE LIGHTER THE SCREEN MESH, THE FASTER IT DIRTIES. LIGHTER SCREEN COLORS ALSO CREATE A GLARE AND ARE HARDER TO SEE THROUGH. WE RECOMMEND DARKER COLOR FABRICS \*\***

# MORE IMPORTANT INFORMATION

## ABOUT THE INSTALLATION PROCESS



- Channels/brackets are installed during the framing stage BEFORE brick, stone, or stucco.

## SEAMS

- Phifer Tuff Insect Screen goes to 132" H. This is the tallest screen made. After 132", there will be a *visible* seam in the screen.
- Solar Screen goes to 120" H. After 120", there will be a *visible* seam in the screen.

- All screens pull 110v/2.1 amps each. We prefer an outlet vs hardwiring. This way we can unplug one screen to service instead of shutting all of them down at once during repairs which requires the homeowner to be home.
- Somfy Systems, Inc., the world's largest manufacturer of tubular motors for interior and exterior window coverings, is excited to introduce the new Maestria™ 50 RTS motor, a smart solution for exterior screens. Designed to motorize all types of exterior vertical screens, the Maestria offers state-of-the-art functionalities needed for zip applications such as obstacle detection and automatic adjustment.

*See Slide #13 for all home audio accessories.*

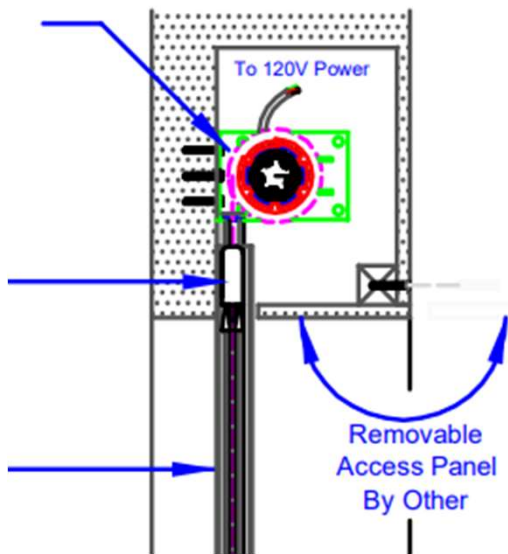
**\*\* All screens must have removable panel for the entire width of the screen. Please see specifications on next page for more information. \*\***



## ABOUT OUR SCREENS

# RECESSED SPECS

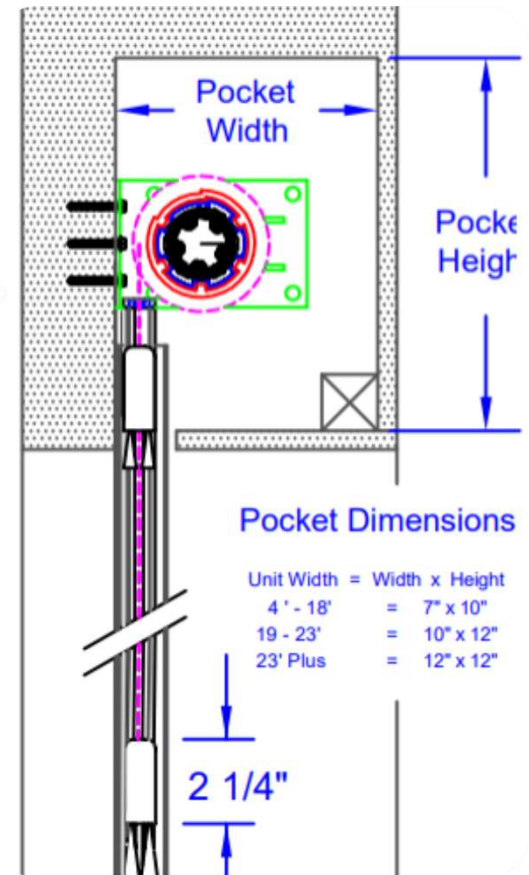
SCREENS BETWEEN 3' – 25' WIDE & 16' TALL



## POCKET DIMENSIONS

UNIT WIDTH = WIDTH x HEIGHT

4' - 18'	=	7" x 10"
19' - 23'	=	10" x 12"
23'+	=	12" x 12"

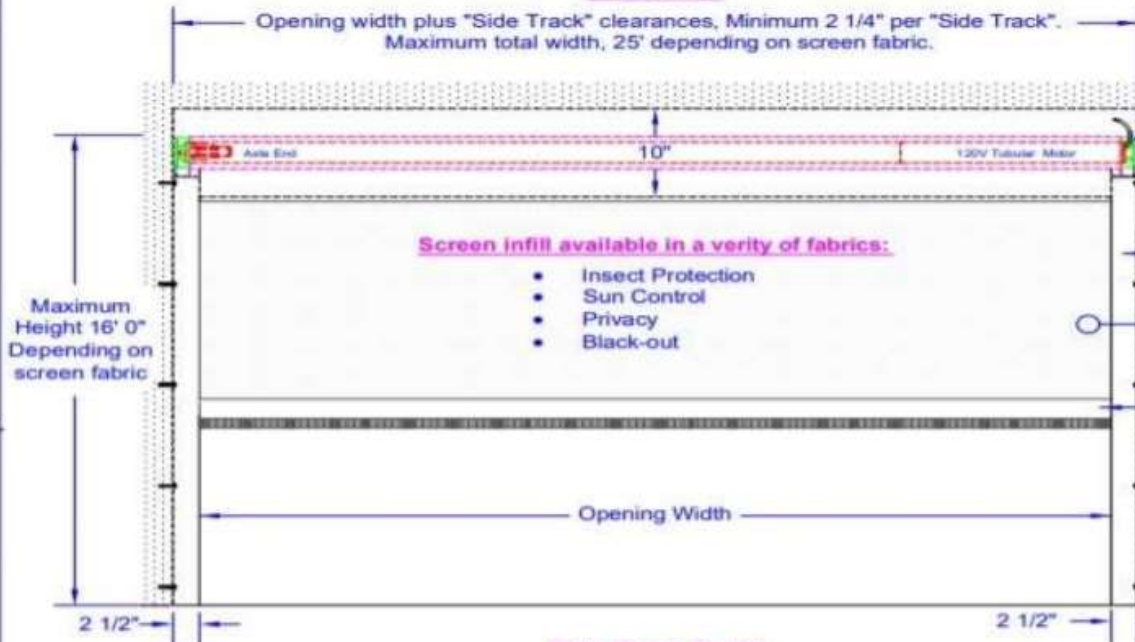


**\*\* SEE FULL SPECS ON NEXT SLIDE \*\***

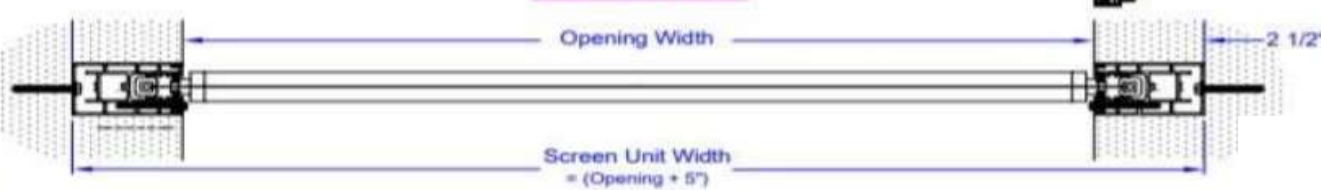
# Installation Specification

## Recessed Mount Using Mounting Brackets

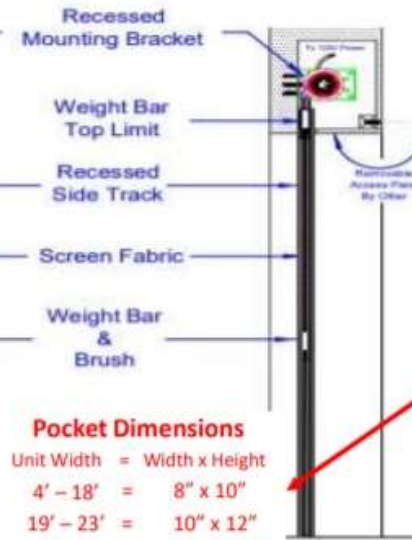
Front View



Side Track Detail



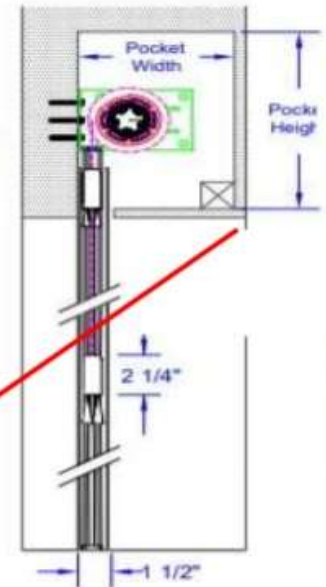
Side View



### Pocket Dimensions

Unit Width	=	Width x Height
4' - 18'	=	8" x 10"
19' - 23'	=	10" x 12"
23' +	=	12" x 12"

Pocket & Weight Bar Detail



### Motor

- \* 120V AC 60Hz "Somfy" Motor
- \* Index Protection Rating: IP 44
- \* Rated Current 1.3A to 2.1A
- \* c/w Object detection or clutch





Weight bar slot

Removable panel

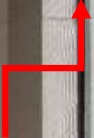
Recessed tracks



Screen cavity



Hidden tracks



Weight bars

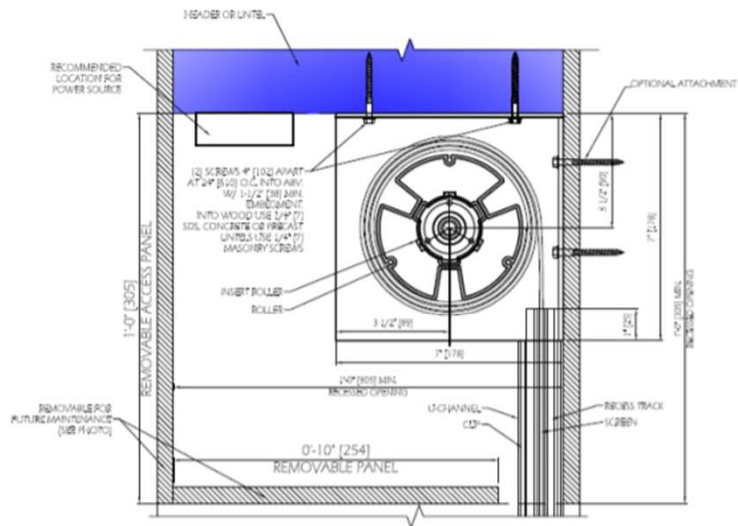




# RECESSED SPECS

## SCREENS BETWEEN 25' - 32' WIDE & 16' TALL

**\*\* SEE FULL SPECS ON NEXT SLIDE \*\***



**DETAIL J-B**  
7" RECESSED ROLLER MOUNT  
(FINISHED HEIGHT 144 1/2"=192")  
(FINISHED WIDTH 240 1/2"=300")

NOTES: Detail J-B (left) maximum width is now 384".

Cavity height is variable, based on space limitations.

Channels must be on the same plane as brackets.

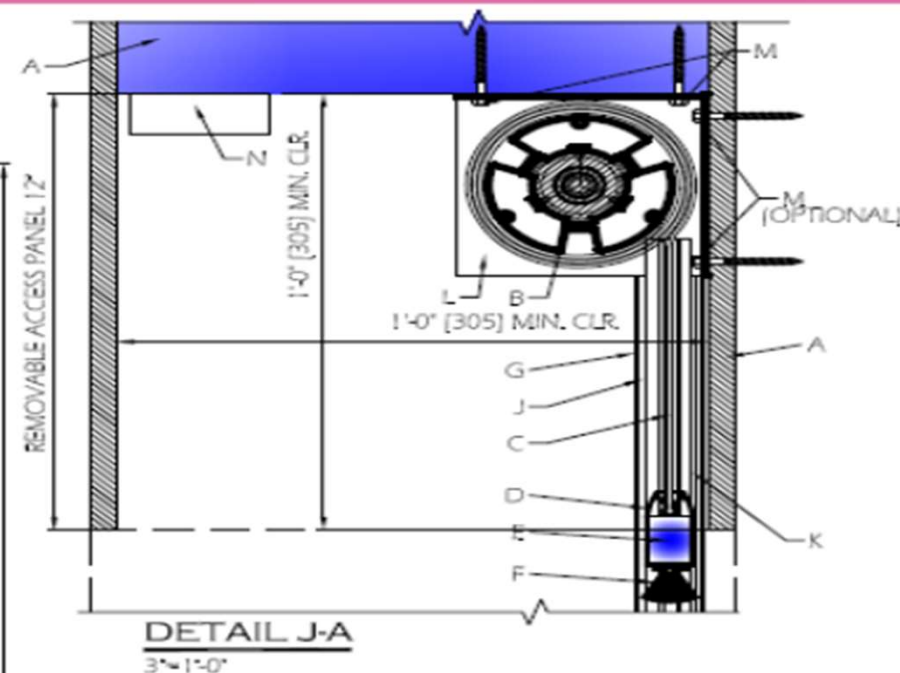
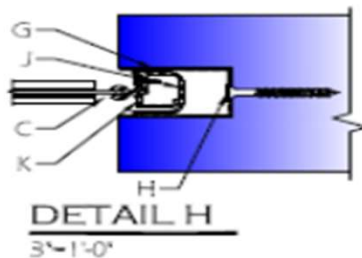
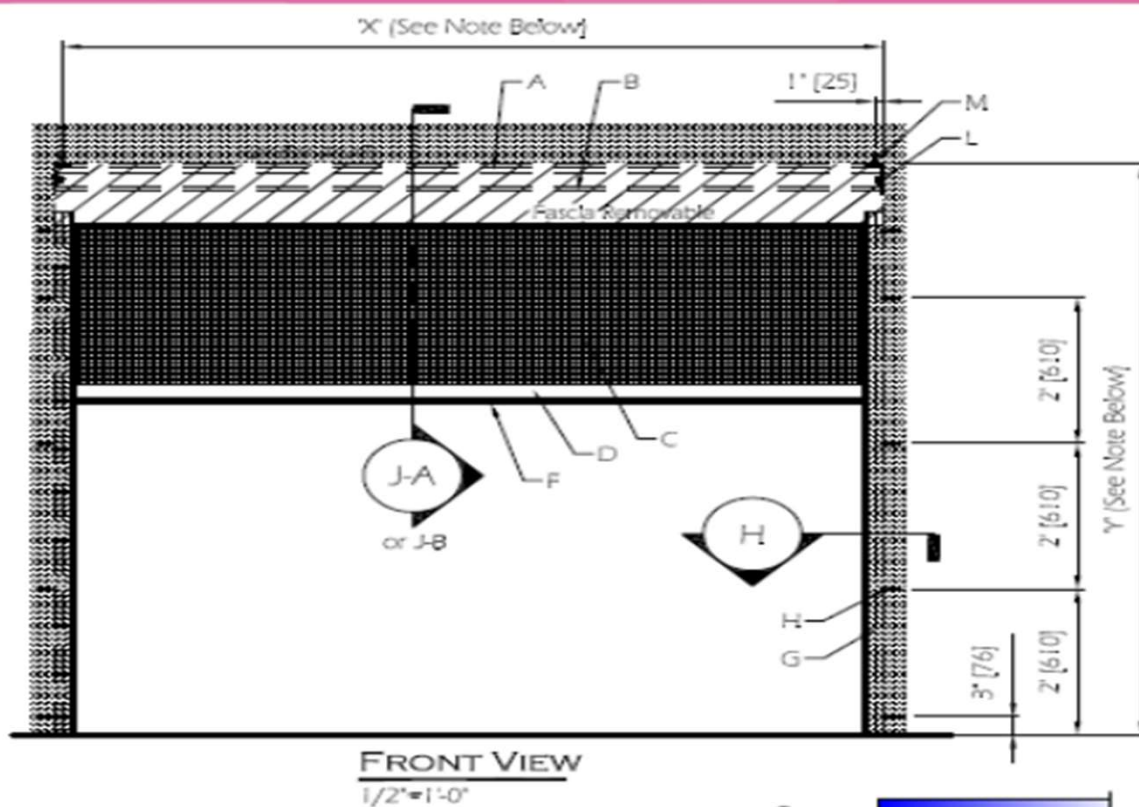
MUST have removable access panel on bottom or front.

Nothing may impede on required pocket space.

Electrical should be run to the pocket during framing.

**BOX SIZE – 12" X 12"**





- |   |  |
|---|--|
| <p>A. HEADER &amp; FASCIA (BY OTHERS) REMOVABLE ACCESS PANEL REQUIRED ON EITHER FRONT OR BOTTOM POCKET. COMPLETE WIDTH OF UNIT</p> <p>B. ROLLER ASSEMBLY</p> <p>C. SCREEN</p> <p>D. "WEIGHT" BAR</p> <p>E. STEEL BAR INSERT WEIGHT</p> <p>F. FELT STRIP</p> <p>G. U-CHANNEL</p> <p>H. CHANNEL ATTACHMENT SCREWS</p> <p>J. CUP</p> | <p>K. INSERT TRACK</p> <p>L. ROUJER MOUNTING ANGLE</p> <p>M. ATTACHMENT SCREWS FASTEN UP INTO HEADER OR BACK INTO POCKET</p> <p>N. RECOMMENDED LOCATION FOR POWER SOURCE</p> |
|---|--|

## RECESSED ROLLER

RECESSED TRACKS (NO HOOD)

J-A (X) = 35" MIN. TO 240" MAX.

(Y) = 36" MIN. TO 144" MAX.

J-B (X) = 240 1/4" MIN. TO 300" MAX.

(Y) = 144 1/2" MIN. TO 192" MAX.

**KJ CUSTOM**  
SCREENS & OUTDOOR LIVING



Screen seam

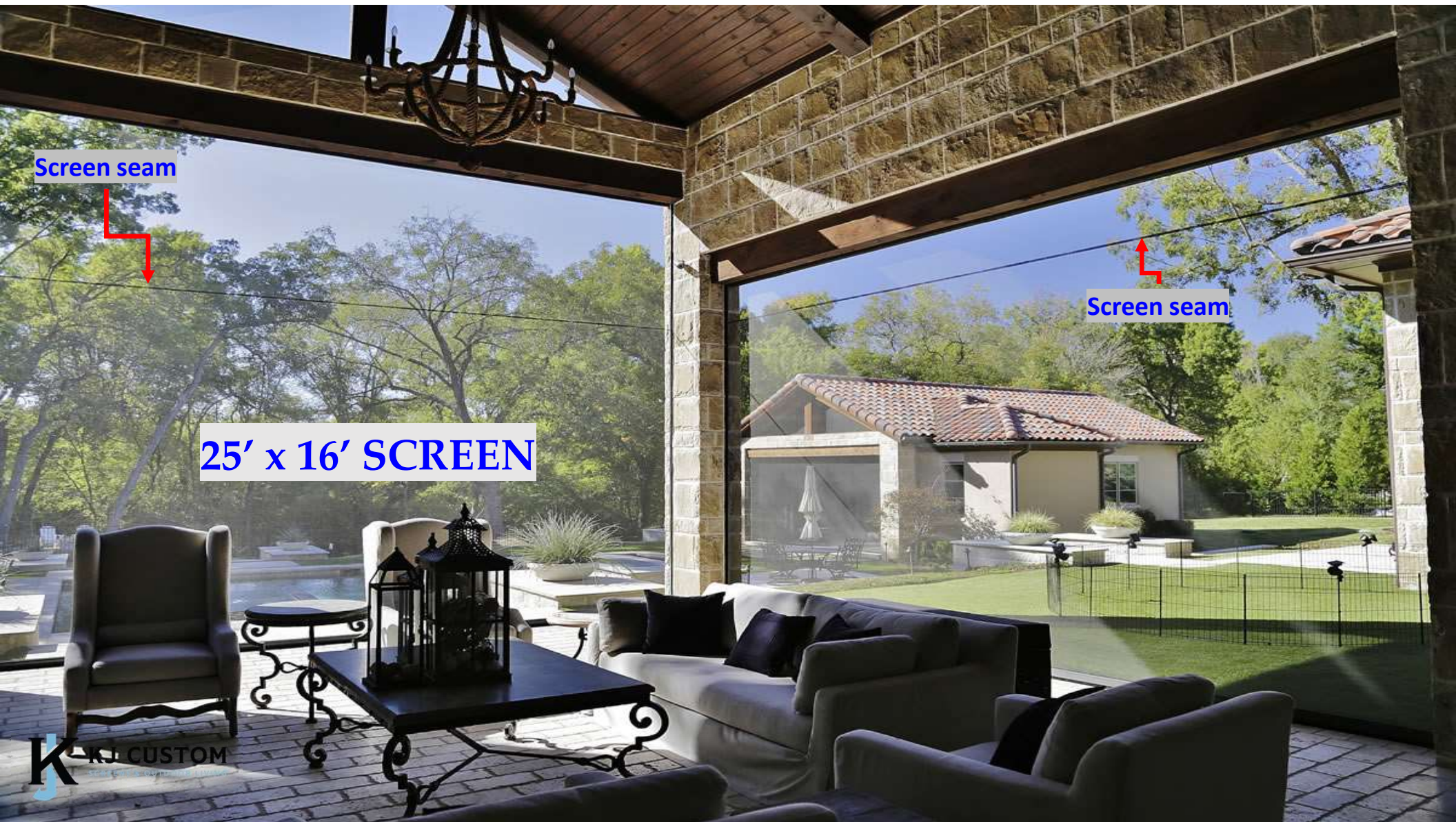


Screen seam



25' x 16' SCREEN

**K** CUSTOM  
SCREENS







27' x 10' SCREEN





**REMOVABLE  
PANELS STILL  
NEEDS TO BE  
SIZE OF SCREEN**



# ADDITIONAL ACCESSORIES

## HANDHELD REMOTES



1 CHANNEL



5 CHANNEL



16 CHANNEL

## IN-WALL REMOTES



1 CHANNEL



5 CHANNEL

**\*\*REQUIRES CUTTING INTO DRYWALL\*\***

## WIND SENSOR



DETECTS WHEN HIGH WINDS HIT AND RAISES SCREENS AUTOMATICALLY TO PROTECT FROM DAMAGE

## WALL REMOTES



1 CHANNEL



5 CHANNEL

**\*\*WALL-MOUNTED\*\***

## MYLINK APP



myLink is a simple device that turns your smartphone or tablet into a sophisticated remote control for motorized products. Now works with Alexa and Google Home.

## URTSI INTERFACE



The URTSI allows third party automation systems to control Radio Technology Somfy® (RTS) motorized solutions.



# SCREENS BEHIND THE SCENES...



**U-CHANNELS  
INSTALLATION**

**BOX FRAMING**



**FINISHED IMAGE OF  
RECESSED PANELS**

**INSTALLATION OF  
BRACKETS**



# RESIDENTIAL SCREEN IDEABOOK



**GARAGES**



**SLIDERS/  
DOORS**



**BALCONIES**



*INSIDE VIEW*

**WINDOWS**

*OUTSIDE VIEW*





---

# COMMERCIAL SCREEN IDEABOOK





# CONTACT INFORMATION

✉ TERESA@KJCUSTOM.COM  
☎ (972) 670.3670

✉ KAITY@KJCUSTOM.COM  
☎ (817) 658.0657

✉ JACKIE@KJCUSTOM.COM  
☎ (817) 614.4019

🌐 [HTTP://WWW.KJCUSTOM.COM/](http://www.kjcustom.com/)